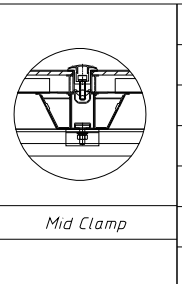
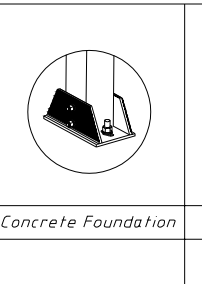
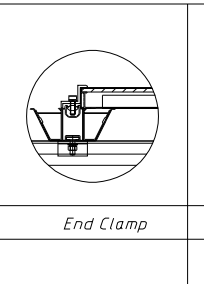
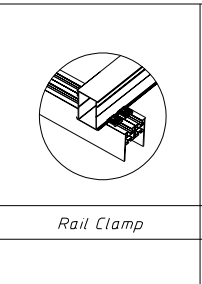
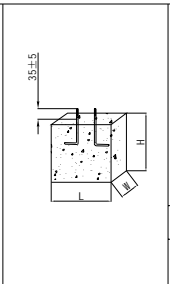
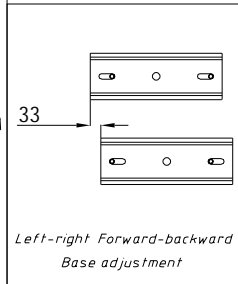
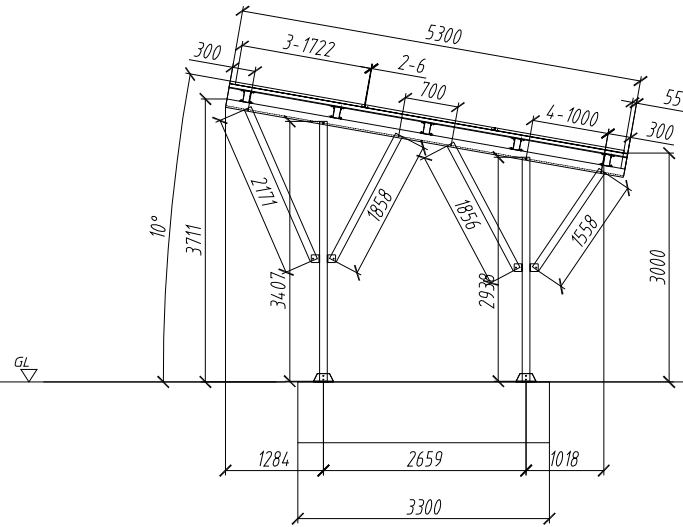
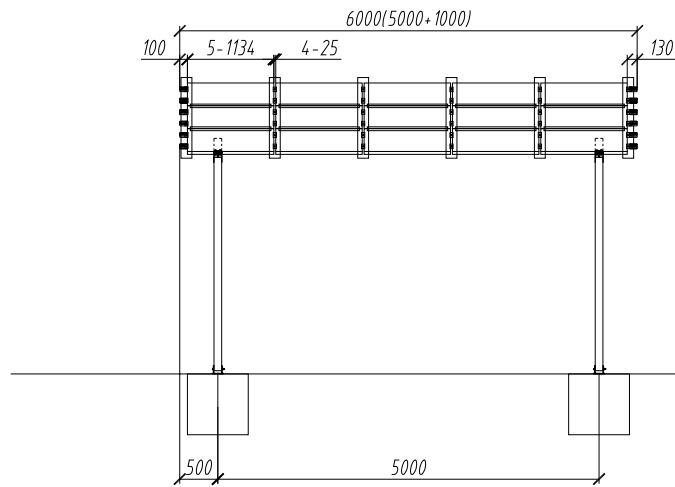


3	DSN	Version	Detail	Name	Date
4	1				
5	2				

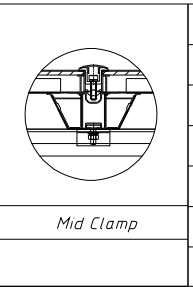
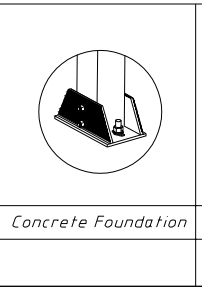
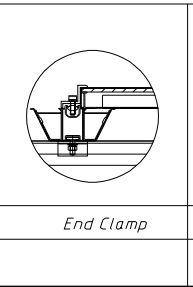
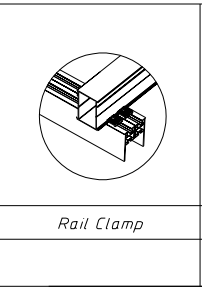
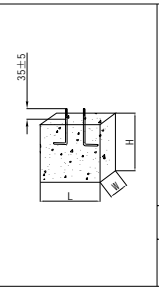
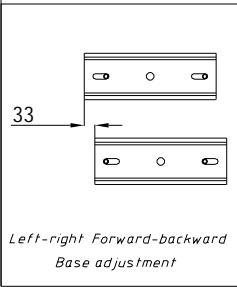
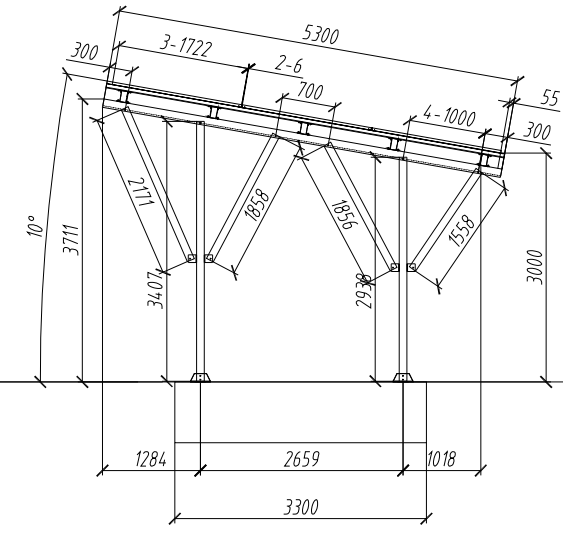
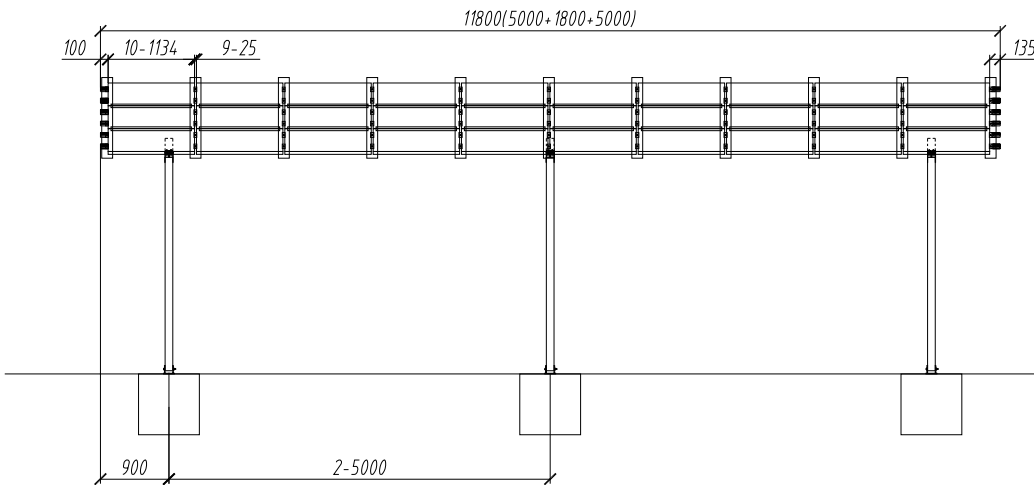


Project Info	Carport-6kw	
Racking Type		
Panel Size	1722x1134 x30	
Wind Speed	30m/s	Snow Load
Design	Eri	Surface Roughness
Confirm	Abel	3x5
Approval	Abel	

Standard	jis 2011	Version	v10
Material	6005-T6+SUS304		
Page	1/1	Date	



3	DSN	Version	Detail	Name	Date
4	△1				
5	△2				



Project Info	Carport-12kw		
Racking Type			
Panel Size	1722x1134x30		
Wind Speed	30m/s	Snow Lode	
Design	Eri	Surface Roughness	B
Confirm	Abel	3x10	
Approval	Abel		

Standard	jis 2011	Version	v10
Material	6005-T6+SUS304		
Page	1/1	Date	